



KORPACK CEMENT PRODUCTS CO. LTD.  
 154 WELLINGTON AVENUE  
 TRAIL, B.C. V1R 2K2

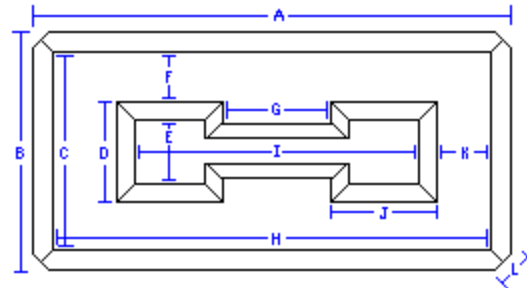
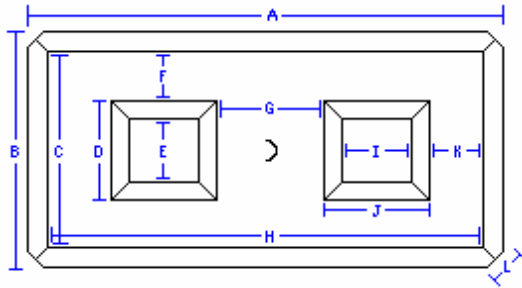
WWW.KORPACK.CA  
 EMAIL: INFO@KORPACK.CA  
 FAX: 250.368.9124

**LOCAL CALLS**  
**TOLL FREE CALLS**

**250 - 368 - 8266**  
**1 - 877 - 568 - 8266**

**KORBLOK DIMENSIONS:**

**4350 lbs**

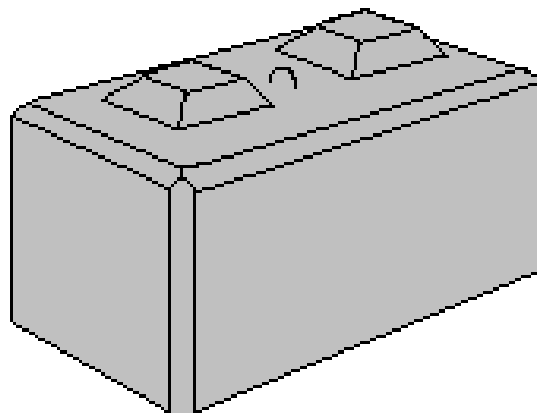


Top View		
Code	Imperial	Metric
A	59"	1500 mm
B	29.5"	750 mm
C	25.5"	650 mm
D	12"	300 mm
E	8"	200 mm
F	6.75"	170 mm
G	18"	460 mm
H	54.5"	1385 mm
I	8"	200 mm
J	12"	300 mm
K	6.25"	160 mm
L	3"	75 mm

Bottom View		
Code	Imperial	Metric
A	59"	1500 mm
B	29.5"	750 mm
C	25.5"	650 mm
D	14.5"	368 mm
E	10"	250 mm
F	5"	125 mm
G	15"	380 mm
H	54.5"	1385 mm
I	38.75"	985 mm
J	14.5"	368 mm
K	5"	125 mm
L	3"	75 mm

**Height :** 29.5"  
750 mm

**Width:** 29.5"  
750 mm



**Length:** 59"  
1500 mm